

HOUSTON BUSINESS JOURNAL

MAY 3-9, 2024

THE LOOP

**FRESH GOODS**

## **H-E-B to build 500-acre distribution campus**

San Antonio-based H-E-B LP is planning a massive distribution campus in the Houston area, where it is one of the top two traditional grocery store chains.

The company announced April 25 that it closed on nearly 500 acres in Waller County for the project. The Hempstead site is south of U.S. Highway 290 and east of Highway 6, roughly 50 miles northwest of downtown Houston.

Financial terms of the deal were not disclosed, H-E-B said, and information about the seller and brokers involved was not immediately available.

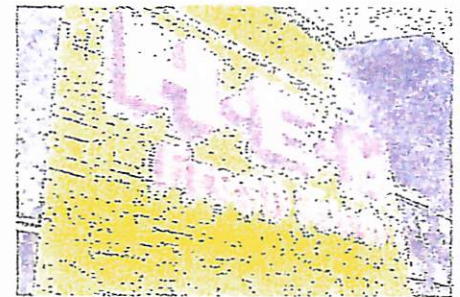
The campus will include several distribution facilities developed in multiple phases, H-E-B said. The first phase of construction is expected to start in late 2024.

As the campus is still in the planning phase, additional details will be released as

the project progresses, H-E-B said. However, the company said the campus will include facilities to support supply chain operations for H-E-B's growing business.

"The land purchase is the first step in the development of this strategically planned campus, a project that will position H-E-B to better serve our customers well into the future," H-E-B Chief Supply Chain Officer Carson Landsgard said in a statement. "The investment demonstrates H-E-B's commitment to communities across Texas and will give us the opportunity to create more jobs in the Hempstead area in the coming years."

In March, H-E-B hit 95 Houston-area stores with the opening of its Madera Run location. That 117,000-square-foot store, at 16000 Woodland Hills Drive in Humble, is in The Groves master-planned community across



JACK WITTHAUS/HBJ

*San Antonio-based H-E-B LP is planning a massive distribution campus in the Houston area to support its growth.*

the street from the Pavilion at The Groves apartment complex.

Meanwhile, H-E-B Katy Park opened on Feb. 21. That store, which also spans 117,000-square-feet, is located at 24924 Morton Ranch Drive in the 54-acre The Market at Katy Park development.